

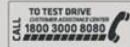
CHOOSE OUR EVER GROWING NETWORK TO SERVE YOU BETTER



WARRANTY: 3 years/100,000 km (whichever is earlier)*



Insist on Chevrolet Genuine Accessories from our authorized dealers. One year/20,000 km warranty on accessories.



Features mentioned and accessories shown will vary by model and may not be a part of the standard equipment. Colors and specifications are subject to change without prior notice. Colors shown may not match the actual colors due to printing limitations. *Chevrolet promise offer applies to the maintenance and repairs earned at the authorized service stations for a period of 3 years/100,000 km (whichever is earlier). **Warranty coverage 3 years/100,000 km (whichever is earlier). Chevrolet is a registered trademark of General Motors Company. For full terms and conditions, please contact your nearest dealership or visit our company website www.chevrolet.co.in.

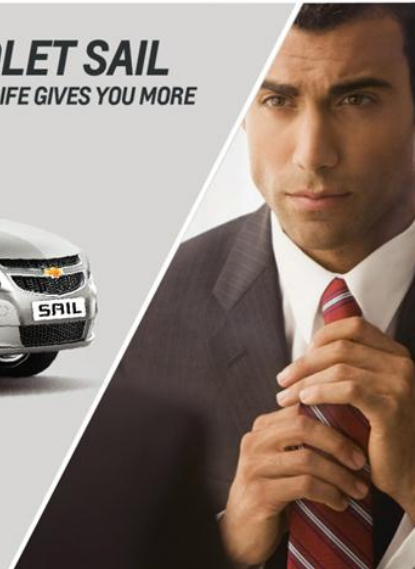
Chevrolet Sales India Pvt. Ltd.
Regd. Office and Works: Block 8, Chandrapura Industrial Estate
Hald - 389351, Dist. Panchmahal, Gujarat.

FIND NEW ROADS™



CHEVROLET SAIL

WHEN LIFE GIVES YOU MORE



SAIL COLORS





WHEN LIFE GIVES YOU MORE

The Chevrolet SAIL embodies the bold pioneering spirit and ingenuity which has become the hallmark of Chevrolet. A stylish and muscular yet classy sedan, this car is artistically sculptured to the tee, while its muscular contours give it a classy three-dimensional trend-setting form. Loaded with only the most-advanced safety features, superior boot space, luxuriously spacious interiors and powertrain options; the Chevrolet SAIL is for the urban heroes looking to conquer life.



CHEVROLET CORVETTE-INSPIRED DUAL COCKPIT DESIGN

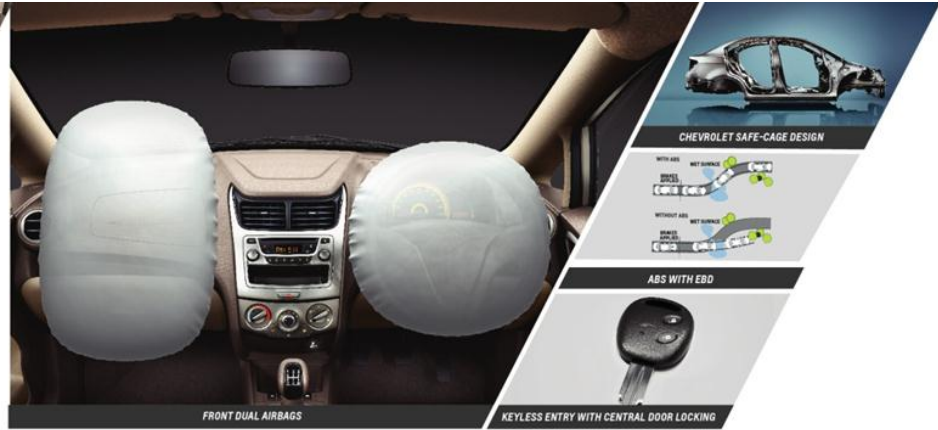
BOLD FRONT-END STYLING

HAWK-WING STYLE FRONT HEADLAMPS

RIISING SUN STYLE INSTRUMENT CLUSTER

STAND OUT

The Chevrolet SAIL belongs to those who stand out. An aggressive and macho front styling based on the *Dynamic Sculpture Design philosophy*, along with its wide stance lends it an unmatched grace. Elegant finish and broad shoulders apart, the muscular physique of the Chevrolet SAIL is graced with its elegant wide-angled jewel-effect tail lamps and wrap around head-lamps. The stunning Chevrolet Corvette inspired Dual Cockpit Interior Design with a refreshing Rising Sun instrument cluster, luxuriously blended two tone interiors with highlights in silver and chrome, define the overall appeal and charm of the Chevrolet SAIL.



FEEL PAMPERED AGAIN

Luxurious Comfort and Ergonomic Convenience are in the DNA of the Chevrolet SAIL. Sail comfortably over pot-holed roads with the Chevrolet Sail's unique suspension set up. Drive off smiling with the speed-sensitive auto locks. Adjust the OSRVs electrically at just a touch of a button. Turn on the tropicalized air-conditioning to enjoy a cool breeze in the harsh summers. This is thoughtful engineering for a rejuvenating driving experience – you will never settle for less.

A SAFE BET

The Chevrolet SAIL comes with an unmatched set of Active and Passive Safety Features. Its Safe-Cage Design with a 3-point force dispersion structure with in-built crumple zones and side impact beam in doors provides enhanced safety for the cabin occupants. The centrally-located fuel tank fortified by cross-structures is an added protection in case of a side impact. Made of sterner stuff, well it's true.

GEARED FOR ACTION

The Chevrolet SAIL Sedan is the perfect choice for a better life. Its SMARTECH Engines with superior torque, promise an unbeaten and enjoyable performance. In addition, the 3 Years Chevrolet Promise ensures that this car is the most versatile value proposition for you. So that you're high on life, always.

The All New 1.3L SMARTECH turbo-charged diesel engine mated to the premium F17 transmission is a powertrain to be enjoyed with the assurance of superior fuel efficiency, slick gear shifts and seamless power delivery. Manufactured at GM Powertrain Talegaon, Pune sets a new benchmark in technological superiority, superlative performance and efficiency standards. Low inertia valve train with hydraulic lash adjusters reduce maintenance hassles and the extraordinary common rail fuel injection system provides an ultra-smooth, extremely fuel efficient engine operation enhancing its on-road performance.

The Chevrolet SAIL Sedan is also available in 1.2 SMARTECH Petrol Engine which ensures a superior driving experience and excellent on road performance with its refined power delivery.

1.3L Turbocharged DOHC SMARTECH Diesel Engine

Power: 78PS@4000rpm

Torque: 205Nm@1750rpm



SAIL DIESEL
22.1 kmpl



OBD-II

SAIL PETROL
18.2 kmpl

SMARTECH
ENGINES

1.2/DOHC SMARTECH Petrol Engine

Power: 86PS@6000rpm

Torque: 113Nm@5000rpm



3 YEARS
PROMISE
3 YEARS/45,000KM**

Assured low maintenance cost
A commitment from Chevrolet for 3 years/45,000 km**
For more details, please contact your nearest Chevrolet dealer

SPECIFICATIONS

DIMENSIONS	DIESEL	PETROL
Overall Length (mm)	4249	4249
Overall Width (mm)	1690	1690
Overall Height (mm)	1503	1503
Wheel Base (mm)	2465	2465
Ground Clearance (mm)	168	174
Cargo Volume (l)	370	370
Seating Capacity	5	5
ENGINE & TRANSMISSION		
Cylinder Count	4	4
Volume (cc)	1248	1199
Max. Power (PS@rpm)	78@4000	86@6000
Max. Torque (Nm@rpm)	205@1750	113@5000
Fuel Efficiency (km/l)*	22.1	18.2
Fuel Tank Capacity (l)	40	42
Emission Standard	B5 (v) (D60 E)	B5 (v) (D60 E)
Transmission	5 MT	5 MT
WEIGHT		
Kerb Weight (kg)	1124	1085
Gross Weight (kg)	1519	1450
TURNING RADIUS		
Turning Radius (m)	5.15	5.15
SUSPENSION & BRAKES		
Front Suspension	McPherson Struts	McPherson Struts
Rear Suspension	Torsion Beam Axle	Torsion Beam Axle
Front and Rear Shock Absorbers	Passive Twin-Tube Gas Filled Shock Absorbers	Passive Twin-Tube Gas Filled Shock Absorbers
Brakes (Front & Rear)	Front: Disk Rear: Drum	Front: Disk Rear: Drum
WHEELS & TYRES		
Wheel Size	14 X 5.5J	14 X 5.5J
Tyre Size	175/70 P14	175/70 P14
Tyre Type	Tubeless	Tubeless

FEATURES

	SAIL SEDAN DIESEL PS LS LS40E C740E	SAIL SEDAN PETROL PS LS LS40E C740E	SAIL SEDAN DIESEL PS LS LS40E C740E	SAIL SEDAN PETROL PS LS LS40E C740E
EXTERIOR				
Dual Port Grill with Golden Chevrolet Bowtie	✓	✓	✓	✓
Chrome Radiator Front Grille	✓	✓	✓	✓
Hawk Wing Style Headlamps	✓	✓	✓	✓
Body Colour Front & Rear Bumpers	✓	✓	✓	✓
Body Colour Outside Rear View Mirrors	✓	✓	✓	✓
Shooting Star Style Foglamps	✓	✓	✓	✓
Roof Antenna	✓	✓	✓	✓
Full Wheel Cover	✓	✓	✓	✓
Alloy Wheelset	✓	✓	✓	✓
INTERIOR				
Dual Tone Interior (Coffin Beige)	✓	✓	✓	✓
Fabric Upholstery	✓	✓	✓	✓
Three Spoke Sporty Steering Wheel	✓	✓	✓	✓
Center Stack Bezel with Metallic Paint	✓	✓	✓	✓
High Volume Drive Box	✓	✓	✓	✓
Cup Holders in Front Console	✓	✓	✓	✓
Front Door Map Pockets	✓	✓	✓	✓
Amber Colour Interior Illumination	✓	✓	✓	✓
Front Seat Back Pockets	✓	✓	✓	✓
Chrome Inside Door Handles	✓	✓	✓	✓
Chrome Parking Brake Button	✓	✓	✓	✓
Leather Stripped Steering Wheel	✓	✓	✓	✓
Metallic Paint on AC Vents	✓	✓	✓	✓
Leather Seatwash	✓	✓	✓	✓
COMFORT & CONVENIENCE				
Power Steering	✓	✓	✓	✓
Air Conditioner with Heater	✓	✓	✓	✓
Front Power Windows	✓	✓	✓	✓
Power Adjustable Outside Mirrors	✓	✓	✓	✓
Tilt Steering	✓	✓	✓	✓
Day & Night Inside Rear View Mirror	✓	✓	✓	✓
Rear Seat Armrest with Cupholders	✓	✓	✓	✓
Rear Height Adjustable Headrests	✓	✓	✓	✓
Remote Fuel Filler and Tailgate Release	✓	✓	✓	✓
Rear Seat Integrated Headrest	✓	✓	✓	✓
On-Drive Side Sunvisor with Vanity Mirror	✓	✓	✓	✓
Interior Courtesy Lamp	✓	✓	✓	✓
Luggage Compartment Lamp	✓	✓	✓	✓
Digital Tachometer	✓	✓	✓	✓
FEATURES				
ABS	✓	✓	✓	✓
Airbag	✓	✓	✓	✓
Rear Power Windows	✓	✓	✓	✓
Control Door Locking	✓	✓	✓	✓
Digital Clock on Audio Display	✓	✓	✓	✓
Remote Keyless Entry	✓	✓	✓	✓
Rear Defogger	✓	✓	✓	✓
Cigar Lighter	✓	✓	✓	✓
7.5W WIDE AUDIO SYSTEM				
Integrated Audio System with Radio, MP3 & CD Player	✓	✓	✓	✓
4 Speakers (2 Front & 2 Rear)	✓	✓	✓	✓
Auxiliary Input & USB Socket	✓	✓	✓	✓
Bluetooth**	✓	✓	✓	✓
Mobile Music Streaming	✓	✓	✓	✓
Mobile Handfree	✓	✓	✓	✓
Phone Parking (3 Phones)	✓	✓	✓	✓
Automatic Reconnection	✓	✓	✓	✓
Make/Receive a Call	✓	✓	✓	✓
End a Call/Reject a Call	✓	✓	✓	✓
Caller ID	✓	✓	✓	✓
SAFETY				
Safe Cage Body Structure	✓	✓	✓	✓
Engine Immobilizer	✓	✓	✓	✓
Front Seat Belts - 3 Point ELA	✓	✓	✓	✓
Door Locking Mechanism	✓	✓	✓	✓
Key In Reminder	✓	✓	✓	✓
Door Ajar Warning Lamp	✓	✓	✓	✓
Centrally Located High - Mount Stop Lamp	✓	✓	✓	✓
Dual Air	✓	✓	✓	✓
Side Impact Front & Rear Door Beam	✓	✓	✓	✓
Rear Seat Child-Protection Door Locks	✓	✓	✓	✓
Driver Airbag	✓	✓	✓	✓
Speed Sensitive Door Lockback	✓	✓	✓	✓
ABS + EBD	✓	✓	✓	✓
Passenger Airbag	✓	✓	✓	✓
Front Seatbelts with Pretensioners	✓	✓	✓	✓

456 of 4

**Compatibility dependent upon Mobile Phone.

**Always use certified by certification agencies as per statutory conditions under rule 115 of CMVR.